



*'Every donor counts
in our quest to
reach zero deaths
from melanoma'*

MIA CO-MEDICAL DIRECTORS





'We are delighted to 10 years later still be MIA's major benefactors and continue to contribute annually to the collaborative research and treatment effort underway at MIA.'

GREG POCHE AO AND KAY VAN NORTON POCHE AO

Photo taken 2014

Every donor counts...



10 YEARS
DEDICATED
TO MIA
EVENTS

'Good actions give strength to ourselves and inspire good actions in others.'
PAGE 4



\$25
PER MONTH

'My contribution costs less than a month of coffees but delivers so much more.'
PAGE 9



SUPPORT
FOR TWO
MULTI-YEAR
RESEARCH
PROJECTS

'We have a great sense of pride in the successes gained.'
PAGE 10

Contents

It is with much pride that we detail our advances and achievements over the last year, particularly in the face of many challenges, and also celebrate the generosity of our loyal supporters and donors who over the last decade have fuelled our progress towards zero deaths from melanoma.

Chairman and CEO's Report	4
Co-Medical Directors' Report	5
Our COVID-19 Response	6
Awards & Publications	7
Clinical Trials	8
Research Infrastructure	10
Laboratory & Applied Research	12
Supportive Care	13
SPECIAL FEATURE: A Game-Changing Decade	14
Education	18
Our Community	20
Acknowledging Our Generous Donors	22
Partners	23
Concise Financials	24
Governance	26



'My survival is my inspiration to show my appreciation.'
PAGE 13



'Researchers need us to donate, and we need them to find a cure.'
PAGE 23



'Leaving a bequest is my contribution to helping future generations survive.'
PAGE 25

Chairman and CEO's Report

It is with pleasure that we detail the many achievements of, and the resilience shown by, the team at Melanoma Institute Australia over the past 12 months. The challenges faced were unprecedented, as was our collective response as we continued on our path towards saving lives from melanoma.

COVID-19 brought with it not only challenges for how we maintained patient services at The Poche Centre, but also how we dealt with the financial implications of the pandemic. The immediate cessation of our major annual fundraising event Melanoma March and the cancellation of all community fundraising events meant we needed to re-evaluate and safeguard our financial position. The organisation was forced to make some difficult decisions in terms of staffing and financial outlay, and we thank all staff and our melanoma community for their understanding, support and resilience during this period.

We take this opportunity to also thank our many donors who continued to provide their financial support during quite uncertain economic times. This support is both immensely reassuring and stabilising and is testament to the high regard our research and clinical care specialists are held within the community.

As a result of the changes made, MIA is financially stable and well set for the year ahead. Importantly, with the ongoing support of the community,

the organisation is well placed to cope should any further challenges arise from the pandemic spiking again in Australia.

It is important this year that we reflect on the generosity of our major benefactors Greg Poche AO and Kay Van Norton Poche AO. We have celebrated a milestone – 10 years of the clinical experts and researchers at Melanoma Institute Australia working as a collective body at The Poche Centre – and how this legacy has re-shaped the melanoma research and treatment landscape and set us on a path towards achieving our mission. This Annual Report includes a special feature on the advances made over the last decade, as well as our goals for the next decade.

The achievements of this year have cemented MIA's reputation for having the best and brightest melanoma researchers and clinicians in the world, led by our Co-Medical Directors. It was with much pride that we celebrated Professor Georgina Long's appointment as an Officer (AO) of the Order of Australia as part of the Queen's Birthday Honours List. And at the time of writing, Professor Richard Scolyer had just been

announced as the 2020 Outstanding Cancer Researcher of the Year at the NSW Premier's Awards. This award will be detailed in full in next year's Annual Report.

Finally, we would like to pay special tribute to the everyday Australians whose generosity continues to fuel our research and progress. Quite simply, our achievements in developing new treatments and saving lives would not be possible without their ongoing financial support. We hope you enjoy reading some of our donors' stories, and join us in thanking them for their invaluable contribution.

Grant King
Chairman



Matthew Browne
CEO



JAMES ECONOMIDES – MELANOMA MARCH

'We started fundraising for MIA after the loss of our 20 year old son. The medical team was incredibly caring, in particular Prof Rick Kefford. Back in 2008 there was little they could do, so we wanted to help raise money for much needed clinical trials so no other family would have to go through what we went through.

It's an emotional rollercoaster ride being involved in the melanoma space that took my son's life, but it is something that also gives me strength. Very early on I read this quote from Plato which resonates with me and I hope

others too – "Good actions give strength to ourselves and inspire good actions in others".

I feel like we're helping make a difference raising funds through Melanoma March and other events, like Jay's Longest Melanoma March, as every step we take in helping MIA brings them a step closer to achieving zero deaths from melanoma. They can't do it alone.

If you're considering donating to MIA just remember it's not the size of the donation that matters - it's actually taking that first step to donate. Even if we all make a small donation, collectively it makes a huge difference.'



Co-Medical Directors' Report

This year has been like no other in most of our lifetimes in terms of the global challenges faced, and we are proud to report on the strength and dedication shown by Melanoma Institute Australia in continuing on our mission to reach zero deaths from melanoma.

There is no doubt that 2020 delivered challenges the world was not ready for. The COVID-19 pandemic impacted every facet of our lives – how we lived, how we worked, and critically, how we delivered treatment to our patients. Our heartfelt thanks and appreciation go to all our research and clinical colleagues and all health staff who have been on the COVID-19 frontline both here and around the world.

When COVID-19 took hold in Australia in March, MIA reacted swiftly to protect the health and wellbeing of our patients, our wider community and our staff. Our Melanoma March physical events were cancelled, non-patient facing staff began working from home, and The Poche Centre quickly became focussed on one thing – delivering continuous care for our patients via our clinical trials and on-site clinics. Strict entry and infection control protocols were implemented at The Poche Centre, with tele-health established to enable vulnerable patients to receive care remotely. Our weekly Multi-Disciplinary Team meetings converted from face to face to zoom, ensuring critical cases still benefited from review and input from Faculty members across all clinical disciplines. We are very proud that our patient care continued unabated and uninterrupted during the height of the pandemic.

Our research effort continued with international collaboration and conference learnings delivered online. Remote working posed many challenges, but productivity and spirits across MIA remained high. We thank MIA's CEO Matthew Browne, Faculty and Clinical Committee for helping us navigate through the challenges of the pandemic. We also extend our gratitude to MIA's clinical staff and corporate support teams for their flexibility, stamina and commitment, and thank our patients and wider community for their understanding and cooperation during what continues to be uncertain times.

In spite of the challenging environment, there continued to be clinical and research advances moving us ever closer to achieving our mission of zero deaths from melanoma. One highlight was the launch of our Melanoma Risk website housing three online melanoma risk calculators. Led by our MIA colleagues Professor Anne Cust, Dr Alex Varey and Associate Professor Serigne Lo, the development of these online calculators will assist in prevention, early detection and optimum treatment of melanoma. We are planning to launch additional risk calculators for other stages of melanoma, including a predictor of drug therapy response in 2021.

We also made great strides towards the development of a personalised therapeutic approach to treatment, with testing underway of our Personalised Immunotherapy Platform. Funded through our Melanoma March campaign, the platform predicts what immunotherapy treatment will successfully treat each specific patient's disease, and is expected to further improve outcomes for patients with advanced melanoma.

Our busy clinical trials unit maintained its focus on investigator-initiated trials, with emphasis continuing on neo-adjuvant trials to improve the outcomes of patients with high risk Stage III melanoma. These trials will likely pave the way for breakthrough new treatments being available that will prevent patients progressing to advanced melanoma.

This year saw MIA's important expansion into regional NSW to improve melanoma health care for rural patients and their families, our merger with melanomaWA, as well as our valuable investment in expanding survivorship and supportive care research and psychosocial services.

In September 2019, our research strategy was once again peer-reviewed by an External Scientific Committee



which carried out its first review of MIA in 2018. We were delighted that these pre-eminent committee members again endorsed our strategy and were blown away by our progress. The review committee is now meeting annually in order to help guide MIA to meet its mission.

Special acknowledgment is extended to our colleague Professor Rick Kefford AM who retired this year after decades of leadership in melanoma clinical care and research. His input has changed the lives of many, and he leaves a legacy that all of us at MIA work every day to honour.

We are continually buoyed by the collective research effort and clinical work underway at MIA. This Annual Report includes a special feature on the 10 year anniversary of The Poche Centre, and we are proud to celebrate the inspirational work of MIA clinicians across all disciplines and the ground-breaking advances in melanoma prevention, diagnosis and treatment during this time.

Of course, none of this would be possible without the ongoing support and generosity of MIA's loyal donors, large and small. Each donation supports our daily work, which is taking us ever closer to achieving our goal of saving all lives from melanoma. So on behalf of every clinician, researcher, and team member at MIA, we extend our heartfelt thanks to every single donor and supporter of MIA's. You are quite literally saving lives.

Professor Georgina Long AO
Professor Richard Scolyer
Co-Medical Directors

Our COVID Response

Just like the rest of the world, Melanoma Institute Australia had to quickly adapt to the challenges arising from the COVID-19 pandemic. The health and safety of our patients and our staff was, and continues to be, paramount as we adjusted our work practices and protocols in line with the evolving health crisis.



Our clinical trials team underwent a complete change in operations to ensure we continued to provide patient care and access to all our clinical trials in a COVIDSafe manner. In early March, when the impact of the pandemic on Australia first became evident, the team of 20 was divided into two groups. Both groups began working independently and in isolation from the other to protect the operation of the unit and ensure patient care could continue should one team need to quarantine. As a result of this early planning and forward thinking, our clinical trials team was able to continue delivering treatment uninterrupted to our patients throughout the pandemic.

At The Poche Centre, we implemented strict entry procedures and protocols in line with NSW Health regulations and our own MIA infection control policy. As a result, all of our Practices were able to remain open and provide care to our patients. Each Practice also initiated effective tele-health measures

which ensured the most vulnerable patients received care without the risk of exposure to the virus.

The majority of non-patient facing staff worked remotely during the height of the pandemic in NSW, with workspaces re-configured to enable the staggered COVIDSafe return to the office of personnel post the NSW lockdown period.

The pandemic also had a devastating impact on our community events, including our flagship Melanoma March awareness and fundraising campaign. We had held just five of our 24 planned March events when we had to cancel all remaining physical events due to the quickly escalating health crisis.

While many of the COVIDSafe measures remain in place, life at The Poche Centre has returned to what is our new COVIDSafe normal, and we will remain ever vigilant to protect the health and wellbeing of our patients, staff and the wider community.

Telehealth was so reassuring

73-year old Patricia Hunt has been a patient of Associate Professor Alex Menzies for the past five years. She was diagnosed with Stage IV melanoma when she was 67-years-old and given the bleak prognosis that she may have only months to live. She was put on an immunotherapy clinical trial, and after only two infusions, scans revealed she'd had a total response to treatment.

'I don't know what was harder to absorb – my original diagnosis that I had Stage IV melanoma and was dying, or the news that after only two rounds of treatment on a clinical trial, I had no evidence of disease,' Patricia said. 'It was an amazing response and I am indebted to the work of the wonderful team at Melanoma Institute Australia.'

Patricia now has 3-monthly appointments at MIA to monitor her ongoing health. She was due for a regular check-up with Associate Professor Menzies in April, at the height of the COVID-19 restrictions in NSW. With a partner in a high risk category, and with adult children in the health sector who 'wouldn't let me out the front door', Patricia was reluctant to drive from her home in regional NSW to The Poche Centre in Sydney for her appointment. Instead she opted for MIA's telehealth service, set up to enable patients to be reviewed by their clinicians without having to leave their homes.

'I was told that Associate Professor Menzies would call me at my appointment time, but to be prepared it might be half an hour before or after due to his busy schedule,' Patricia said. 'Then right on time my phone rang and it was him. He checked in on how I was feeling and we discussed my latest scans. It was re-assuring to know my doctor was only a phone call away and COVID didn't mean I had to miss my appointment, as even though I am clear of disease I still have that voice in my head saying 'what if?'.

Patricia with partner Rodney and grandson Freddie



Awards & Publications

Melanoma Institute Australia clinicians and researchers continue to be recognised and awarded for their leadership role in global melanoma research and treatment.

Queen's Birthday Honour for Professor Georgina Long AO

Congratulations to MIA Co-Medical Director, Professor Georgina Long, who was appointed an Officer (AO) of the Order of Australia (General Division) for distinguished service to medicine, particularly to melanoma clinical and translational research, and to professional medical societies.

'This is well deserved recognition of Professor Long's lifesaving work and ground-breaking research,' said fellow MIA Co-Medical Director, Professor Richard Scolyer. 'She has changed the face of melanoma treatment around the world and many thousands of people are alive today thanks to her intellect, determination and passion,' he said.

Professor Long is one of the world's most renowned melanoma clinicians and researchers with her clinical trials tripling life expectancy for some advanced melanoma patients and essentially curing others. She is a fierce advocate that recent advances and breakthroughs in melanoma treatment stem from the collective effort of the dedicated multi-disciplinary team at MIA.

'Not only is Professor Long saving lives and changing the future for melanoma patients around the world, but she is also an inspiring role model for all young Australians, particularly women, who may be working towards a career in science and medicine,' added MIA CEO Matthew Browne.

Expertscape World Rankings

In the latest 'Expertise in Melanoma' world rankings, released by expertscape, three of the world's top 10 melanoma experts are from MIA, including both our Co-Medical Directors Professor Georgina Long AO and Professor Richard Scolyer and our former Executive Director Professor John Thompson AO. Special congratulations also to Associate Professor Alex Menzies and Associate Professor Matteo Carlino who both feature notably in the world rankings.

In the Australian rankings, Professors Long and Scolyer are ranked as the top two melanoma experts, with eight MIA clinicians and researchers named in the top 10, and 13 named in the top 20. The expertscape rankings are based on articles published since 2010.

Other Key Awards & Honours Co-Medical Directors (JULY 2019 TO JUNE 2020)

PROFESSOR GEORGINA LONG AO

- President of the internationally based Society for Melanoma Research (SMR)
- Clarivate Analytics 2019 'Highly Cited Researcher'
- Named as Field Leader (Oncology) in 2019 The Australian Newspaper's Research Magazine
- Finalist in 2019 Australian Financial Review '100 Women of Influence' Awards

PROFESSOR RICHARD SCOLYER

- American Society of Dermatopathology Elson B Helwig award
- Clarivate Web of Science Group 'Highly Cited Researcher 2019'
- The University of Sydney's 2020 Alumni Award for International Achievement
- Named in The Pathologist's 2020 Power List

Publications - the measurement of research output

FINANCIAL YEAR	Number of papers published	Publications in top 25% journals	Publications in top 10% journals	Publications in top 1% journals
2019-2020	182	153	133	34
2018-2019	177	149	132	27
2017-2018	161	136	121	23
2016-2017	123	86	76	6

Clinical Trials

MIA continues to be a world-leader in developing, leading and running clinical trials that provide breakthrough treatments for melanoma. All our patients have the opportunity to participate in clinical trials, and by doing so, become part of the concerted research effort to develop treatments which will ultimately save all lives from the disease.

MIA Investigator-Initiated Trials

An intensive focus remains on investigator-initiated trials (IIT), where MIA researchers develop clinical trial concepts and strict protocols, and MIA is responsible for driving the research. These vitally important trials are only possible thanks to fundraising efforts and generous support from donors.

IITs differ from industry-led clinical trials which are developed and driven by our partners in the pharmaceutical sector and provide access to new drugs being developed by key pharmaceutical leaders. IITs allow doctors and researchers to test treatments developed from their own experience in treating patients and working in the lab. IITs also offer opportunity to combine clinical research (involving patient care) with laboratory research using melanoma specimens. Cohesion between patient facing research and laboratory research is vital to better understand the different ways patients respond to melanoma treatment, and how treatments may be personalised to a patient's own melanoma biology.

MIA conducts both types of clinical trials (investigator-initiated and industry-led), with our number of IITs well above global benchmarks.

This year we continued emphasis on neo-adjuvant investigator-initiated clinical trials as a way to improve the outcomes of patients with Stage III melanoma which has spread to lymph nodes and are at a high risk of melanoma recurrence.

The standard treatment for patients who develop Stage III melanoma is to have surgery to remove the affected and surrounding lymph nodes (a complete lymph node dissection) followed by treatment with adjuvant targeted therapy or immunotherapy.

The **NeoPeLe** and the **DONIMI** are investigator-initiated trials which have been designed to test the sequencing of a combination of anti-cancer drugs before complete node dissection surgery.

The NeoPeLe Trial

The NeoPeLe trial was developed by MIA researchers and tests the hypothesis that the combination of immunotherapy (pembrolizumab) with a second type of cancer treatment designed to suppress the growth of blood vessels feeding the melanoma cells (lenvatinib), will result in the eradication of melanoma cells within affected lymph nodes. A pathologist microscopically examines the lymph node specimen after surgery to determine how the nodes have responded to neo-adjuvant treatment. This response is known as the pathologic response, and previous research shows that when all (or nearly all) melanoma cells have been eradicated from the lymph node, the chances of melanoma recurrence after surgery is greatly reduced. It is hoped that the combination of drugs in NeoPeLe will improve the pathological response compared to when neo-adjuvant immunotherapy is given alone.

The DONIMI Trial

The DONIMI trial also investigates combinations of anti-cancer treatments to improve the pathological response to neo-adjuvant therapy. In this trial, immunotherapy



Number of active trials

Investigator-Initiated Trials	Industry-led Trials
7	15



Number of new patients

Investigator-Initiated Trials	Industry-led Trials
138	90

1 JULY 2019 TO 30 JUNE 2020



'adjuvant therapy'



'neo-adjuvant therapy'

(nivolumab and/or ipilimumab) is combined with an anti-cancer medicine known as an HDAC inhibitor (dominostat) which blocks the action of certain enzymes involved in the spread of cancer. The amount of treatment a patient receives is personalised to the patient's own level of interferon in their melanoma.

Interferon is a protein produced in response to infection which alerts the body to the presence of cancer and triggers immune cells to kill the cancer cells. Some melanoma patients have high levels of interferon and some have a low amount. A low amount of interferon might indicate that stronger treatment is needed to trigger the immune cells. Depending on a patient's own melanoma biology and their interferon signature, patients will receive one of the medications or a combination of up to three of the medications. The aim of the trial is to understand whether a personalised treatment approach, which potentially limits drug exposure and possibility for side-effects, is an effective treatment for melanoma.

Non-Melanoma Skin Cancers - The Sonib Trial

The Sonib trial is an investigator-initiated neo-adjuvant trial for patients with basal cell carcinoma (BCC). Non-melanoma skin cancers, including basal cell carcinoma (BCC), are the most common cancers in Australia. BCC is the most prevalent type of skin cancer and accounts for about 70% of all skin malignancies. Surgical excision is the most used treatment for BCC and is considered to have the best cure rate. However, excision of large BCC tumours in cosmetically challenging areas like the face poses a surgical challenge due to risks of disfigurement and change in the normal function of the skin area. The aim of this research is to test whether a hedgehog pathway inhibitor (sonidegib) given before surgery, can shrink the size and depth of the BCC, making surgery less invasive or possibly not even required at all. Hedgehog inhibitors block the activation of cancer cells and prevent them growing and duplicating.

The ongoing important role of surgery

For primary melanoma of the skin, current guidelines recommend a margin of between one and three centimetres of healthy skin be removed from around the melanoma. Previous research suggests a one-centimetre excision is enough to reduce a patient's risk of melanoma recurrence in the same area.

The Mel-Mart trial will answer the question about whether a one or two centimetre margin is best. Given that surgery remains the first line of defence in melanoma, with up to 90% of early melanomas successfully treated this way, this is an important question to answer. The first phase of the trial is now complete with 400 patients recruited worldwide, including a cohort of 76 from MIA. The second phase of the trial opened at MIA in May this year with 25 patients already enrolled. The goal is to recruit 2998 patients worldwide.

Growing Our Phase 1 Trial Toolbox

Phase 1 trials are the first time a new drug is tested on humans after rigorous testing in the laboratory and are vital for the development of new melanoma treatments. Phase 1 trials are often more complex in nature, with close monitoring of patients and one-to-one nursing required to manage side-effects quickly and safely. MIA, in partnership with Mater Hospital, is increasing the number of Phase 1 clinical trials available to melanoma patients.

Supporting clinical trial access for rural patients

One third of patients in MIA clinical trials travel more than 100km for their treatment. MIA has partnered with Cancer Council NSW and Cancer Institute NSW to run a Clinical Trials Pilot Financial Assistance program to reduce the financial burden, stress, and worry about travel and accommodation, and improve clinical trial accessibility for patients in remote areas. The program has so far assisted 23 patients in gaining access to trials at MIA.

In addition, following MIA's merger with the Amie St Clair organisation in Wagga Wagga, MIA will soon open clinical trials in this region and use this as a model for other regions across NSW and Australia.

TRACEY GRAMLICK - REGULAR GIVER

'Growing up in the 1960's, little did we know of the consequences of being on the beach all day without protection. Sunburn was almost a rite of passage. In early 2017, when I was not quite 60 and only weeks before my daughter's wedding, I was diagnosed with melanoma. I was immediately referred to MIA and here I am four years later and grateful every day for the swift diagnosis and treatment. My one request to my surgeon was to please get

me up and on my feet to dance at my daughter's wedding – which I did! I am proud and pleased to be a regular giver to MIA. I look at my ever growing family and hope that my contribution goes towards keeping them aware and safe from this insidious cancer. I am always happy to buy a coffee a couple of times a week when I'm out with friends, and my monthly contribution to MIA costs me less than that but delivers so much more.'



Research Infrastructure

Biospecimen Bank

MIA's Biospecimen Bank hosts the largest collection of melanoma samples in the world, with all MIA patients having the option of contributing samples.

This year, MIA's Biospecimen Bank provided significant operational support to assist with the opening of two MIA investigator-initiated trials at The Poche Centre and other external sites:

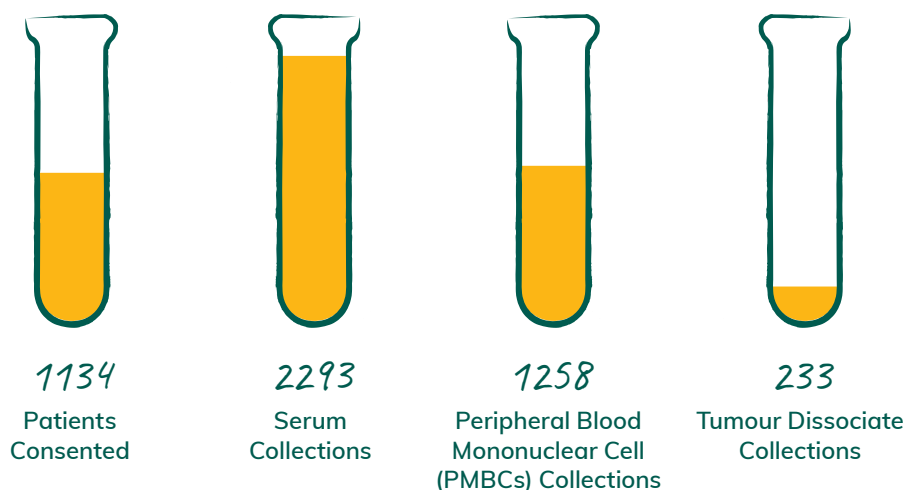
- NeoTrio trial - run at The Poche Centre and Westmead Hospital in Sydney, and the Peter MacCallum Cancer Centre in Melbourne
- ABC-X trial - run at The Poche Centre and Westmead Hospital in Sydney, the Peter MacCallum Cancer Centre in Melbourne, and Princess Alexandra Hospital in Brisbane.

The Biospecimen Bank also collected and prepared 101 clinical trial tissue sendaways for 13 industry-led trials, and carried out an additional 100 tissue collections for two MIA investigator-initiated trials – the PRADO and NeoTrio ABC-X trials.



Collections

From 1/7/19 to 30/6/20



'It is rewarding to know that the work being undertaken by our team at the Biospecimen Bank plays such an integral role in research to further understanding of melanoma as well as diagnosis and treatment advances.'

Rebecca Velickovic - MIA Biospecimen Bank Manager



DAVID MACINTOSH AM – MAJOR DONOR

'My father was a long-term patient of Professor John Thompson AO who was the first Executive Director of MIA. After my father passed away in 2005, I too became Professor Thompson's patient and am still under the amazing care of the directors, clinicians, surgeons and staff at The Poche Centre.

I feel humbled to play a small role in people in Australia and overseas being beneficiaries of advances in research. Len Ainsworth AM (Ainsworth Foundation)

and Edwin Zemancheff (Lady Mary Fairfax Charitable Trust) are good friends who have directed important funding into melanoma research projects in the last two years, with very promising outcomes already evident. My family Foundation directs its donations to specific melanoma research for the benefit of current and future generations, and we have a great sense of pride in the successes gained.'

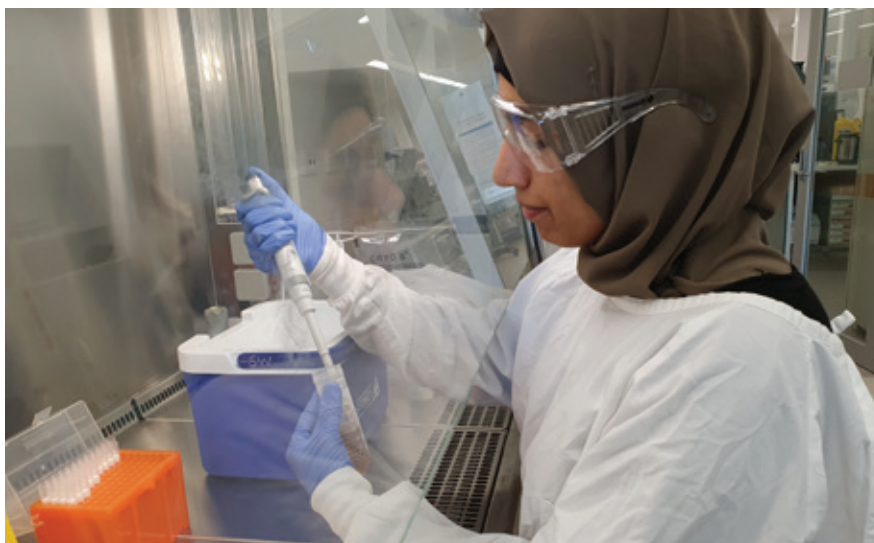
Pictured: David Macintosh AM (right) with Prof. John Thompson AO

Research Database MRD2

In the 1960s, MIA's Research Database was established. Known as MRD2, it drives development of new clinical trials and treatment pathways, and supports national and international scientific collaboration and research projects. MRD2 contains the records of more than 50,000 patients.

87 research projects were fuelled by data from MRD2 this year, including:

- Follow up for the Melanoma Patterns of Care study - this population-based, cross-sectional study was carried out in 2006 and 2007. In 2019, using data linkage with MRD2, MIA provided extensive clinical, surgical and long-term follow-up data for about a third of the full cohort who were treated at MIA.
- Primary dermal melanoma (PDM) study – PDM is a subtype of cutaneous melanoma, confined to the dermal layer, which poses a challenging clinical dilemma. Extraction and analysis of PDM cases in MRD2 showed that PDMs are true primary lesions with a more favourable prognosis compared to Stage I-II cutaneous melanoma. This study provided evidence to justify a treatment approach, by way of a wide local excision and sentinel lymph node biopsy, similar to that followed for early stage primary cutaneous melanomas. The study was published in the European Journal of Surgical Oncology.



Project Teal

In 2018, MIA's external scientific review panel identified that increasing the speed of transition of clinical data to research data was required to ensure MIA's continued research success into the future. In response to this, Project Teal was instigated.

Project Teal is a bespoke internal development that provides the linkage between clinical data capture and efficient transfer of data for research. It will ultimately become an important conduit between what is captured daily from clinicians in guiding patients through their treatment journey, and researchers looking for the latest, most up to date information.

Version 1 of Project Teal is due for completion in 2021, with future versions and enhancements already being scoped to include artificial intelligence, voice recognition, prognostic tool integration and advanced clinical analytics.



MRD2 contains the records of 50,000 patients



87 research projects were fueled by data from MRD2 this year

Patient consent is now easier than ever



Single
Consent
Form



Melanoma
Specimen

Biospecimen
Bank



Patient
Record

MRD2

Clinic → TEAL → MRD2 → Research

Laboratory & Applied Research

Global advances in melanoma prevention, diagnosis and treatment are underpinned by work carried out in MIA's laboratories which helps build knowledge and understanding of the disease.

A game-changing project is the Australian Melanoma Genome Project, which is filling the gap in knowledge about melanoma genome.

Studies coming from MIA's Australian Melanoma Genome Project have been published in a string of major publications, with another two studies published in the prestigious *Nature Communications* this year alone. These studies detailed the genetic mutations that occur across the entire genomes of melanomas that arise in acral skin (sole of the foot or palm of the hand) or uveal sites (inside the eye). These studies cited stark differences in the biology of melanomas which arise in these body sites compared with cutaneous (sun exposed skin) and mucosal (oral cavity, nose and paranasal sinuses, genital tract, and anorectal region) melanomas. Findings were published in *Nature* and *Nature Communications*.

The MIA led project this year also passed a major landmark with the completion of whole genome sequencing of the disease from over 600 melanoma patients. This project is the largest of its type in the world and has now detailed mutations for melanomas from patients of all ages, ethnic backgrounds, and primary melanoma sites, and includes those who received systemic drug therapies.

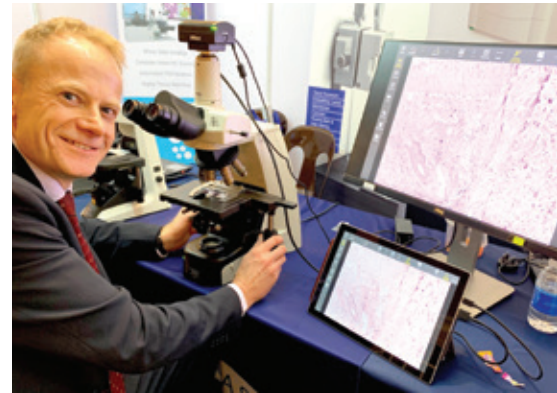
This body of work, which includes 40 publications and counting, forms the vital resource for research from around the world to fast track discoveries for preventative measures and cures for melanoma patients.

Personalised Immunotherapy Platform starts testing

MIA has developed an exciting testing platform which can predict if an immunotherapy treatment will successfully treat the patient's disease. Immunotherapy is a treatment which stimulates the patient's own immune system to kill the tumour cells. The new testing platform can predict success of specific immunotherapies before treatment is even started.

The team has begun a clinical study at MIA to test the accuracy of the testing platform in identifying patients who are unlikely to respond to standard immunotherapies. If successful, this information will be used to alert the clinical teams to patients who need a novel treatment as part of a clinical trial to cure them of their disease.

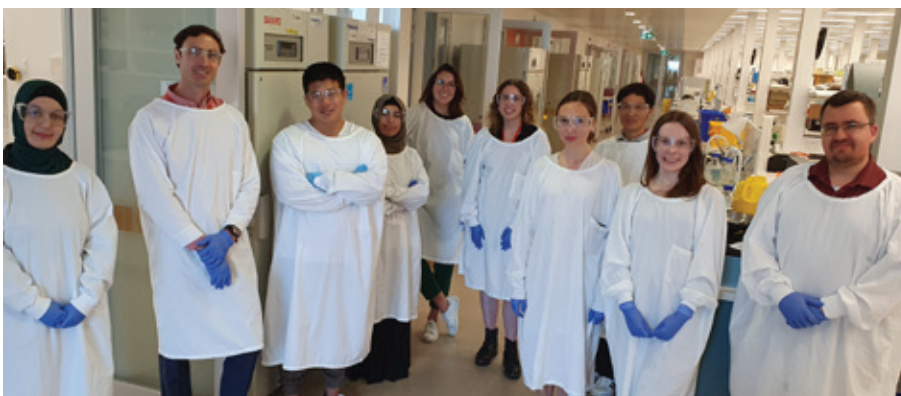
It is expected that such a personalised therapeutic approach will further boost cure rates of patients treated with immunotherapeutic agents.



Professor Richard Scolyer
Co-Medical Director



Professor Georgina Long AO
Co-Medical Director



MIA's research team pictured in our lab located at The University of Sydney's Charles Perkins Centre. This translational lab is led by MIA's Co-Medical Directors, Professor Richard Scolyer and Professor Georgina Long AO, providing ground-breaking research to benefit clinical practice.

Supportive Care

Supportive Care and Survivorship

With the advent of new and more effective drug therapy, increasing numbers of patients are living with melanoma. Supportive care and survivorship aspects of melanoma, which have traditionally been neglected, are becoming increasingly important. MIA's commitment in this area has been supported by generous funding from The Bill and Patricia Ritchie Foundation, resulting in the appointment of Dr Iris Bartula, Research Psychologist, to lead research in this area. Dr Bartula and Associate Professor Robyn Saw, Surgical Oncologist, co-lead MIA's Supportive Care and Survivorship research theme, with the overall mission to embed psychosocial support into routine clinical care. This will be achieved through creating and disseminating new knowledge, translating evidence into routine care, and increasing capacity for psychosocial research at MIA.

We are starting to study survivorship issues specific to melanoma patients, with several research projects currently underway or planned to commence shortly. Patients may be approached to participate in research via email or through discussions with their treating clinicians. These studies aim to enable patients and caregivers to highlight their needs and areas of support by completing a quick survey or patient-reported outcomes prior to seeing their doctor. It is hoped these initiatives will improve identification of patients needing additional support, with timely provision of such support ultimately improving health and well-being outcomes of melanoma patients.

Increasing Support Services to the Community

Patients across the country saw almost immediate benefits of enhanced support services stemming from a multi-year agreement between Melanoma Institute Australia and Melanoma Patients Australia (MPA).

The MPA/MIA agreement focuses on the introduction of a Tele Health Nurse Pilot Program to provide better access of services for melanoma patients; increasing the capacity and expertise of MPA's Peer to Peer volunteer facilitators and volunteer support staff; enhancing face to face support groups within NSW and integration of these into MPA's national support network; and joint involvement in events including patient information sessions and MIA's national Melanoma March campaign.

'With survival rates continuing to improve, the need for this collaboration to strengthen the support services available to our patients and families, is, thankfully, even greater,' said Victoria Beedle, CEO of Melanoma Patients Australia.



'We want to learn what is important to our patients and what supports we can offer to address any difficulties they may face.'

Dr Iris Bartula – Psychologist



PROUDLY SUPPORTED BY



RENEE MARCHMENT – COMMUNITY FUNDRAISER

'My survival is my inspiration to show my appreciation and endless gratitude for the care and treatment I have received and continue to do so from the dedicated MIA team. I feel extremely lucky to call myself a Stage III survivor and it makes me feel good in my heart to contribute to helping those who saved my life to bring an end to this insidious disease.

It is extremely heart-warming and gives a great sense of pride knowing that myself and those who support my events, like

the 6to6 swim, are literally saving lives. Each donation and each fundraiser assist in raising awareness about this terrible disease which can be a silent killer. Together, we are assisting MIA in maintaining their focus on reaching zero deaths. Every little bit counts! When you support MIA, you're supporting a genuine cause.'



Celebrating A Game-Changing Decade

10th
Anniversary

THE POCHÉ CENTRE

As Australians, mateship is part of the fabric of our being. It is such mateship and generosity of spirit that has put Melanoma Institute Australia on the path to achieving what was once the unthinkable – zero deaths from melanoma.

It was only a decade ago that an advanced melanoma diagnosis often meant only months to live. Standard cancer treatments just didn't work for melanoma, which would spread around the body unchecked. Only 25% of advanced melanoma patients survived for a year after diagnosis, with the survival curve taking a sharp downward dive to less than 15% of patients surviving two years after diagnosis, and less than 5% surviving five years after diagnosis. In anyone's terms, advanced melanoma was almost certainly a death sentence.

The grim figures belied the dedication of clinicians and researchers who, working in their disparate specialties at Sydney's major hospitals and universities, were focusing their attention on how to tackle Australia's so-called national cancer. A focal point was the Sydney Melanoma Unit, formed in the 1960s by Dr Gerald Milton. To all clinicians and researchers working in melanoma, their patients were more than just statistics. They were

mothers, fathers, sons and daughters – many losing their battle with melanoma in their 20's, 30's and 40's – and clinicians felt each loss deeply.

Still in Sydney but a world-away from hospital corridors and research laboratories, two lifelong mates were having a conversation. Businessman Greg Poche AO had just sold his logistics business Star Track Express and was looking to give financial support to a worthy cause. Greg asked his close friend Reg Richardson AM to help him find such a cause and Reg immediately thought of his friend, Associate Professor Jonathan Stretch AM, melanoma surgeon and then Deputy Director of the Sydney Melanoma Unit. Reg knew money was desperately needed for substantial research and a dedicated space to treat the growing caseload of melanoma patients.

Greg Poche's 'donation' was \$40 million to build the world's first research and treatment centre dedicated to melanoma, a gift that when announced in 2005, was the largest ever donation by an Australian to a single cause. The aptly named Poche Centre opened its doors to patients in 2010.

'Greg and Kay Poche's belief in our group's capacity to continue its previous world-leading work and usher in new treatments was fundamental to their philanthropy,' said Associate Professor Jonathan Stretch. 'Empowered with their support, the previous Sydney Melanoma Unit was renamed and transformed into Melanoma Institute Australia and a broader and more expansive program evolved, built on the pillars of a greatly expanded commitment to excellence in patient care, research, and education of allied health professionals and society more broadly.'

'10 years ago I asked Greg Poche if he would be interested in donating to support melanoma research. The rest is history.'

Reg Richardson AM, former Chairman Melanoma Institute Australia



Far left: Greg Poche AO
Left: Reg Richardson AM (left) and
Assoc. Prof. Jonathan Stretch AM

The Poche Centre is home to multiple clinics for melanoma patients covering the specialties of surgery, medical oncology, radiation oncology, pathology and dermatology, as well as the world's largest melanoma biospecimen bank, a research laboratory and a busy clinical trials team.

But The Poche Centre is more than just bricks and mortar. It is the engine room for collaboration of the world's best minds in melanoma diagnosis, treatment and research. And lives are being saved as a result. With the advent of breakthrough treatments, many stemming from the collaborative research effort spear-headed at MIA, more than 50% of advanced melanoma patients are now surviving. For the first time, researchers are now looking towards saving all lives from melanoma, a goal MIA's Co-Medical Directors believe will be reached this decade.

Matthew Browne, CEO and Kay Van Norton Poche AO Outside The Poche Centre shortly after the 10th anniversary. The anniversary party was unfortunately cancelled due to COVID-19.

For Kay Van Norton Poche AO, satisfaction comes from knowing she and Greg have made a difference.

'After the sale of the business, Greg and I looked at each other and we thought, oh my goodness this is 10 times over what we can spend in a lifetime, let's give it away, let's give it back to the country,' she said. 'We are delighted that 10 years later we are still MIA's major benefactors and continue to contribute annually to the collaborative research and treatment effort underway at MIA.'

'It will be a proud day when that goal of zero deaths from melanoma is reached.'

Kay Van Norton Poche AO



In the 10 years since The Poche Centre opened we have:

increased staff numbers

2010	2020
11	88

expanded MRD2

2010	2020
33,900 patients	51,540 patients

increased blood collections

2010	2020
3,083	25,191

increased tissue collections

2010	2020
1,702	8,726

published research papers

1,192
including
144
in the top 1% of journals

expanded clinical trials

72
clinical trials opened with
1,873
patients recruited

reduced the age-standardised mortality rate for melanoma

2010	2020
6.0	*4.3
per 100 000 of population	per 100 000 of population

* Estimate from Australian Institute of Health and Welfare, www.cancerinstitute.gov.au

and all this hard work has resulted in the 5-year overall survival rate for advanced melanoma increasing from

<10% to >50%

Celebrating A Game-Changing Decade

It has been 10 years since The Poche Centre opened its doors to patients, becoming the collaborative hub for melanoma research, diagnosis and treatment across all clinical disciplines.

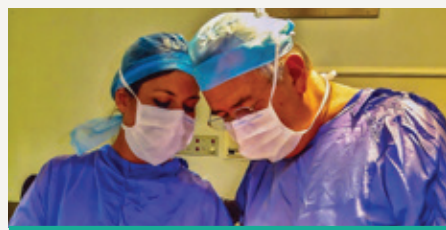
In this special 10-year anniversary feature, MIA's clinicians and researchers across multiple disciplines reflect on the life-changing achievements in melanoma research and treatment of the last decade, and the very real prospects for what can be achieved in the next 10 years.

Surgery

Greg and Kay Poche's initial engagement and indeed commitment to the then Sydney Melanoma Unit was based on the great significance and impact of this disease on Australians and their desire to achieve better results for those patients and more broadly lessen the burden of this disease on society worldwide.

A substantial component of these advances has directly resulted from the massive productivity of the Institute, including translational research and clinical trials which are changing treatment pathways worldwide.

Associate Professor Jonathan Stretch AM
– Deputy Medical Director MIA & Surgeon



'There is indeed much to celebrate 10 years after the opening of Melanoma Institute Australia at The Poche Centre. It is quite extraordinary to reflect on the amazing significance and timing of Greg and Kay Poche's original philanthropy.'

Assoc. Prof. Jonathan Stretch AM

Surgery has been the mainstay of melanoma treatment for decades, with work undertaken at what was the Sydney Melanoma Unit critical to driving advances in this field. Serendipitously, the formation of MIA and the establishment of The Poche Centre occurred when more effective drug therapy for melanoma was at its infancy. This, combined with the strong melanoma surgical unit, research database and clinical and research relationships built around the imperative of patient care, have enabled close collaboration to achieve better outcomes for patients.

The care of later stage melanoma patients is now a much more complex discussion between clinicians, with all MIA clinicians continuing to push boundaries in both the treatment of patients and in research.

It is expected that the next 10 years will bring more new treatments for and research about melanoma at every level, including psychosocial issues.

Associate Professor Robyn Saw –
Surgeon



Medical Oncology

It has been an incredibly fulfilling journey being part of the research that has had a phenomenal impact on patients with advanced melanoma. The 5-year overall survival was once <10% and is now >50%. The multi-disciplinary approach we take at Melanoma Institute Australia underpins our ability to perform high impact research. The collective efforts of clinician-researchers, lab scientists, patients and their families have been critical.

Our next frontier is to have every person cured of melanoma using a tailored approach to their treatment. Our approach in melanoma will lead the way for other cancers.

Professor Georgina Long AO – Co-Medical Director MIA & Medical Oncologist



The Poche Centre has enabled patients to receive comprehensive multidisciplinary care in a modern and welcoming environment and has also enabled researchers to work closely together with the goal of achieving zero deaths from melanoma.

The last decade has seen the birth of effective systemic drug therapy for melanoma, preventing recurrence after surgery and prolonging survival of patients with metastatic disease. Such has been the impact that now even patients with advanced disease have the potential for cure. The next decade will likely see a more personalized or bespoke treatment for each patient, based on a greater understanding of melanoma biology and patient immunity.

Associate Professor Alex Menzies –
Medical Oncologist



Pathology

“The Poche Centre has been a magnet for attracting the best and brightest minds to the melanoma challenge and I’m proud to be part of a ‘Melanoma Dream Team’ that has revolutionised the treatment of patients with melanoma and other cancers and improved their outcomes.

The incredible advances that have occurred in drug therapies for melanoma over the past 10 years have highlighted more than ever the critical role of pathology in ensuring patients receive the right treatment at the right time to enable them to achieve the best outcomes.

Over the next decade, I expect we will not only be using features of the tumour and its associated microenvironment, but also knowledge about a patient’s genetic makeup and dietary manipulation to provide tailored treatments and further improve outcomes.”

Professor Richard Scolyer – Co-Medical Director MIA & Pathologist



Pictured below is MIA’s weekly Multi-Disciplinary Team meeting (MDT) at The Poche Centre, prior to COVID-19 restrictions. MDT is chaired by our Co-Medical Directors, Professors Scolyer and Long AO, and is attended each Friday morning by senior clinicians, fellows and trainees from each of our disciplines to discuss complex patient cases. Such collaboration exemplifies the benefit provided by The Poche Centre. All MDTs during COVID-19 have been via zoom.

Radiation Oncology

“Advances in radiation therapy techniques mean we can now deliver high doses of radiation with precision of within a few millimetres to almost any part of the body affected by melanoma.

Thanks to the collaboration and expertise within The Poche Centre, MIA has now completed the world’s first Phase 3 randomised trial of radiation therapy for patients with melanoma brain metastasis. It is within the realm of possibility that with the advent of combination therapy, including radiation oncology, we will reach zero deaths from melanoma this decade.”

Professor Angela Hong – Radiation Oncologist, Chair of MIA Clinical Committee



“The Poche Centre has provided a venue where clinicians from around the city can join forces to fight a common enemy in melanoma, without being encumbered by the constraints of belonging to one or another hospital group. So only those interested are at the table, sharing their knowledge for the common good of all melanoma patients, no matter who they are.”

Professor Gerald Fogarty – Radiation Oncologist



Dermatology

“As a clinician-researcher, I came to MIA to work on new imaging techniques to better diagnose and manage skin cancers. MIA has been a formidable machine in melanoma, allowing physicists and industry involved in the early phases of developing innovative diagnostic tools to engage in national and international collaborations to enhance their implementation.

The benefits to patients are clear. The advent of 2D and 3D total body photography with automatic comparison, as well as digital monitoring or in vivo confocal microscopy are just a few examples of advances which enable earlier detection and minimise need for surgical intervention.

Equity in access to specialists remains a major health economic challenge, with teledermatology and artificial intelligence providing ways to streamline triage and communication pathways between primary care physicians and specialists. MIA will continue to play a leading role in this area over the next 10 years.”

Associate Professor Pascale Guitera – Dermatologist



Education

SunSafe Student Ambassador Program

Following a successful pilot program, the SunSafe Student Ambassador Program expanded in 2019 to reach high school students across six locations within NSW, ACT and Queensland.

Students were trained to educate their peers on melanoma and the importance of protecting yourself from the sun, to encourage sun safe behaviour and increase early detection. Each session featured a patient who relayed their personal experience of being impacted by melanoma.

The student ambassadors recorded their presentations delivered back at their schools, which were judged by a panel of experts. The SunSafe Ambassadors from Belmont High School were named the winners for their engaging and innovative presentation.



'The girls and I walked away very inspired and motivated to enact some change at WGHS.'

'In particular, hearing Natalie speak was confronting in all the best possible ways and I know that it impacted on my students and myself a great deal.'

Melissa O'Brien
Willoughby Girls High School



Clinical Education

The Melanoma Education Portal (melanomaeducation.org.au) continued to grow with more than 2,300 GPs, specialists and nurses accessing the free online education programs. Clinicians from MIA and their peers regularly developed new online programs translating world-leading research and clinical practice into quality education to ultimately help patients across the country.

This year, our senior clinicians focussed on educating GPs by developing several interactive online modules for GPs and by presenting at a number of conferences including several HealthEd GP Education Days held around the country.

Our annual Nurse Conference was once again held at The Poche Centre with many of MIA's clinicians sharing their expertise with 80 nurses. The conference aimed to help nurses from a variety of backgrounds to better understand the patient experience and included practical insights based on the latest research in melanoma treatment.



A/Prof Matteo Carlino
Chair of MIA Education Committee



62 schools participated



209 students trained as
SunSafe Ambassadors



6 locations across Australia



18,000 students and
teachers reached with
the SunSafe message



'I feel that my patients will benefit from my learning as I feel more adept to answer questions about treatment and side effects.'

NURSE CONFERENCE PARTICIPANT

Melanoma Risk Tools

Researchers at MIA, led by Professor Anne Cust, Dr Alex Varey and Associate Professor Serigne Lo et al, developed a series of online calculators to assist in prevention, early detection and optimum treatment of melanoma. Based on published risk prediction models, the three web-based calculators are housed at www.melanomaris.org.au and are designed to inform discussions between clinicians and patients.

Two of the calculators use patient information such as age, skin type, family history and sun exposure history to calculate individual lifetime risk of a person developing either their initial primary melanoma or a subsequent one. This information then guides discussions between the patient and the clinician about appropriate sun protection behaviours as well as the optimum schedule of skin checks to ensure early detection.

The third calculator predicts risk of disease having spread from a primary melanoma to nearby lymph nodes, and potentially metastasising to other vital organs. It takes into account additional clinical information about the primary melanoma as well as a patient's age.

This calculator enables those deemed to be at low risk of disease spread to safely forgo surgery for a sentinel node biopsy. Conversely, it also detects patients at higher risk of disease spread, increasing potential for earlier identification of lymph node spread and activation of optimum treatment.



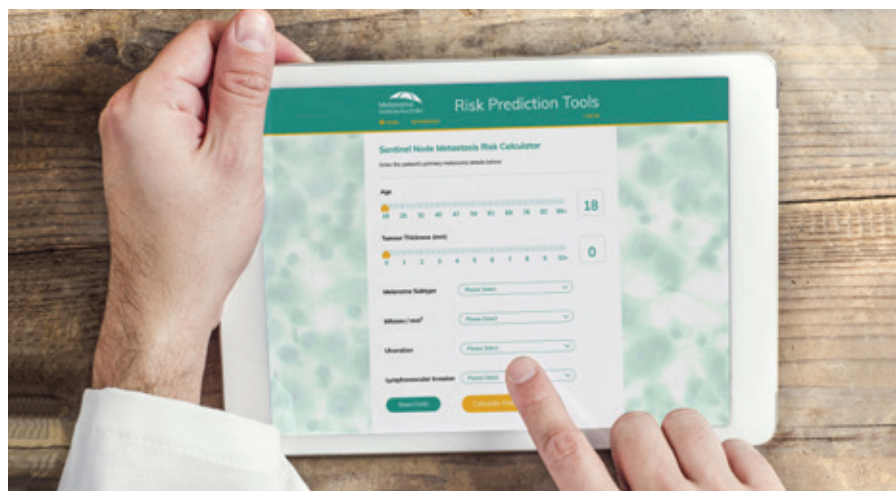
A/Prof Serigne Lo



Professor Anne Cust
Chair of MIA Research
Committee



Dr Alex Varey



MIA Education Program Sponsors



2019/2020 Fellows

1 JULY 2019-30 JUNE 2020

Dr Alberto Kalach

Poche Surgery Fellow

Dr May Thwin

Poche Surgery Fellow

Dr Aljosja Rogiers

Cameron Medical Oncology Fellow

Dr Florentia Dimitriou

Poche Medical Oncology Fellow

Dr Hsien Chan

Poche Dermatology Fellow

Dr Joshua Lin

Friends of The Mater (FoTM)
Breast & Surgical Oncology Fellow

Dr Karina Aivazian

McMurtrie Cancer Pathology Fellow

Dr Andrew Colebatch

Jani Haenke Melanoma Pathology
Fellow (until January 2020)

We would also like to acknowledge Doctors Amelia Taylor, Sarah Maloney, Kay Xu and Kim Tam Bui for providing additional support to the Medical Oncology Fellowship throughout the year.

Registrars and Advanced Trainees

MIA also provided significant Registrar and Advanced Trainee support in the clinical specialties of Medical Oncology, Pathology and Surgery (Plastics):

Dr Natasha Prosser

Anatomical Pathology Registrar

Dr Stuart Hoffmann

Surgery (Plastics) Registrar

Dr Edward Riordan

Surgery (Plastics) Registrar

Dr Kathleen Batty

Medical Oncology Advanced Trainee

Dr Alex Davis

Medical Oncology Advanced Trainee

Dr Catriona Harvey

Medical Oncology Advanced Trainee

Dr Ben McGuigan

Medical Oncology Advanced Trainee

Our Community

MELANOMA MARCH

Principal Partner



Melanoma March 2020 had just begun when the COVID-19 pandemic hit, forcing us to cancel all remaining physical events after holding only 5 of the 24 which had been planned. We sincerely thank our volunteer Melanoma March committees from across the country who had worked tirelessly for several months only to have the majority of events cancelled. Not to be deterred, our community was still able to come together for Melanoma March Virtual on 29th March with people doing their own walking events or activities in line with local lockdown regulations. We look forward to celebrating the 10th anniversary of Melanoma March in 2021.

Amie St Clair Merger



PART OF



The merger of Amie St Clair and MIA provided immediate benefits for melanoma patients and their families in the Riverina. The merger doubled the level of services including increased capacity of free melanoma nursing services, will establish clinical trials in Wagga Wagga, provide opportunities for local melanoma patients to contribute to MIA research, and increased melanoma education opportunities for health professionals and the community.

'Our shared vision is zero deaths from melanoma, no matter where you live, and this is a fantastic opportunity to enhance the effective delivery of treatment and support services to melanoma patients in this region.'

Annette St Clair, Co-founder of Amie St Clair Melanoma Trust

melanomaWA Merger



PART OF



The merger of melanomaWA and MIA provided increased resources to reduce the impact of melanoma in WA. In addition to awareness and education support, the merger will give local, regional, and remote melanoma patients greater access to medical specialists through MIA's network.

'The two highly respected organisations will be working together on a regional and national level regarding awareness, education, support, and research.'

Martin Slabbert, Chairman of melanomaWA

game on mole

Thank you to patients, their families, clinicians, donors and everyday Australians from all walks of life who joined our inaugural 'Game On Mole' awareness campaign. It was cheeky and quintessentially Aussie, and struck a chord with many. Our 'Game On Mole' t-shirts were seen sparking life-saving conversations about skin health everywhere from city streets, beaches and workplaces, to international airports, global research conferences and even in Federal

Parliament!, courtesy of Jason Clare MP. Also spotted in our slogan tee were the likes of author Kathy Lette, comedian Julia Morris, journalist Virginia Trioli and of course our ambassador and melanoma survivor, gold medal winning Olympian Cate Campbell who fronted the campaign. 'Game On Mole' was so successful in raising awareness about sun safety and skin health that it is back for 2020.



Spotted!



INTERNATIONAL



RIDE FOR LIBBY

Libby Widdup passed away from ocular melanoma in March 2017. She had always wanted to cycle along the Danube river from Vienna to Budapest, so in her memory, her daughter Margot and a dozen of her friends donned 'Ride for Libby' shirts and embarked on the week-long adventure in Libby's memory. This amazing journey raised over \$14,500 for MIA.

NSW



BUB'S FAMOUS FISH & CHIPS

Staff at the legendary Nelson Bay venue wore specially designed 'Game On Mole' shirts throughout January to promote melanoma awareness and their fundraising initiative where \$1 from every fish and chips sold was donated to MIA. A big shout out to Joanne Howarth and her team at Bub's!

NSW



SOUTH COAST WALKERS

What a picturesque route for 60 walkers who took on the South Coast Charity walk from Stanwell Park in support of Steve who is undergoing treatment for Stage IV melanoma. We're not sure how many steps they did, but in an amazing effort they raised almost \$3,000 to support MIA research.



AMBASSADORS

Olympian Cate Campbell, TV presenter and interior designer Kyly Clarke, and rugby legend John Eales used their public profiles to help us reach new audiences for our 'Game On Mole' and Melanoma March campaigns. We are grateful for the generous support of all our ambassadors whose personal stories about melanoma help raise awareness as well as vital funds for research.



QLD

AIR CONDITIONING & REFRIGERATION GOLF DAY

The annual North Queensland event was once again held at Rowes Bay Golf Club, this year raising over \$8,000 for MIA in support of their industry colleague and MIA patient, Scott Buckley. The day of golf, lunch and raffles was topped off with speeches from Scott and Melanoma March Townsville Committee Chair Kayla Smith.



QLD

WANTIMA COUNTRY CLUB

This annual Cancer Charity Golf Day was attended by over 120 people who helped raise over \$2,000. The day was filled with golf, food, raffles, and a moving speech from MIA Speakers' Hub presenter Raph McGowan.



QLD

CAMERON DOWNS STATE SCHOOL

We extend our thanks to the Cameron Downs State School Community which held a fundraiser along with the Cameron Downs State School Playgroup. The day included morning tea and a range of activities for the kids and raised over \$200.



QLD

A DAY FOR J

Amelia and Michael Wood have been hosting the Michael Wood Electrical Golf Day for 12 years, and this year, after the loss of close family friend Janelle to melanoma, they decided to fundraise for MIA. Over \$3,000 was raised by 81 players and spectators. 20 members of Janelle's family made the trip to Jandowae for 'A Day for J', with Janelle's son and 7-year-old grandson driving 800kms to be there! Thank you to all involved.



NSW

WOOLLOOWARE GOLF GIRLS

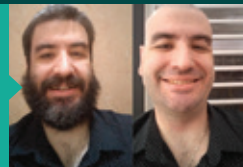
It was sun safety all-round at the Nelson Bay Melanoma Awareness Golf Day. 12 ladies from the Woollooware Golf Girls donned their long sleeve shirts and colourful socks to raise \$400 for MIA.



NSW

CITY2SURF

40 fit and fabulous supporters pounded the pavement for the annual City2Surf, raising more than \$50,000 for MIA.



NSW

BALD GILLY

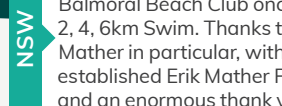
Adrian Gilchrist has shaved his head each year since 2013 after losing his father to melanoma. Thank you to everyone who donated to 'Bald Gilly' and helped him raise \$1,000.



NSW

WOOLLAHRA CHARITY GOLF DAY

A big thank you to Guy Gibson and Vanda Smith for organising this event at the Woollahra Golf Club for the second consecutive year. Over 150 people attended and close to \$10,000 was raised!



NSW

ERIK MATHER SWIM

Balmoral Beach Club once again hosted the Erik Mather 2, 4, 6km Swim. Thanks to the entire club and Monika Mather in particular, with over \$45,000 raised for the newly established Erik Mather PhD Scholarship. Congratulations and an enormous thank you to all involved.



VIC

WARPED

Over two nights, Creative for a Cause presented 'Warped', a musical variety show where all proceeds were donated to MIA in loving memory of Diana Perini. The production was a huge success, raising over \$10,500! Thank you to everyone who participated and special thanks to Greta Georgiou.



VIC

BACKYARD MUSIC FESTIVAL

Just before Christmas 2018, Jenny Keck's daughter-in-law Amanda was diagnosed with melanoma. Jenny hosts a Backyard Music Festival every January and this year it raised \$1,411 for MIA! Big thanks to Jenny, Amanda and MIA's Speakers' Hub speaker Kristy Roberts for helping make the day a huge success.



NSW

WILLARD'S WOMBATS

Teacher Peta Willard was a 36-year-old mother of two young boys who passed away from melanoma early last year. Her touch football team, Willard's Wombats, took part in the Pub2Pub Run as part of their training for the Senior State Cup, raising more than \$2,000 in Peta's memory. Nice work!



Acknowledging Our Generous Donors



MIA major donors at time of printing

PRINCIPAL BENEFACTOR

Greg Poche AO and Kay Van Norton
Poche AO

LIFE GOVERNORS

Cameron Family
Reg Richardson AM and Sally Richardson
Peter and Sally Doherty (CP2)
Apex Foundation
The Melanoma Foundation
Friends of the Mater Foundation
CLEARbridge Foundation
Len Ainsworth AM – The Ainsworth
Foundation
David Macintosh AM – The Macintosh
Foundation

GOVERNORS

Jani Haenke Melanoma Pathology
Fellowship
H and N Moore
Perpetual Foundation
Deborah McMurtrie and John McMurtrie
AM

BENEFACTORS

Jerry Ellis AO and Ann Ellis
The Petre Foundation
Ray and Penni Jones
Nevin and Marie Holland
Neville and Robyn Newton
Skipper Jacobs Charitable Trust
Perpetual Foundation -
HT Andrew & Agnes Cheung Endowment
Perpetual Foundation – The Hilmer
Family Endowment
Toni and Mark Heath
Jim and Fran Sweeny
Peter Rockey
The Ross Trust
Jo Phillips - Natan Foundation
Goodridge Foundation
Jürgen and Mary Fengels
Gai and Tony Wales

COMPANIONS

The Manildra Foundation
Bob MacSmith
Susan Maple-Brown AM
The Charity Challenge
Michael Alscher
The Late Professor Geoffrey White AM
Norman Green
Clive Thomas
Rosemary Pryor Foundation
James N Kirby Foundation
Caroline and Glenn Crane
Lady (Mary) Fairfax Charitable Trust
Janet Ferguson PhD Scholarship
Bradley Hunt
Berson Family
Nigel Masters
Robert and Carole Lane
Nicolette Lewis

ASSOCIATES

Shoalhaven Melanoma Committee
Lee Cronly-Dillon
Robert O Albert AO
Sunspot Melanoma Committee
Ann Powell
Stephen and Michelle Bennett
Julie and Don Priest
Mater Imaging
Keith and Maureen Kerridge
David Mortimer AO and Barbara
Mortimer
Peter Hemming
Equity Trustees
Kaye and Anthony Flynn
The Dick and Pip Smith Foundation
Laurence Edward Wilkins
King Family
Jocelyn Lloyd
Edmund Campion
Joanne Howarth
John Buchanan

Lin Huddleston Charitable Foundation
Dr John P Stephen and Christine Stephen
Ashley & Felicity Benoit
Greg Plummer

FRIENDS

Paul and Michelle Amar
Tony Merrett
Yvonne Schofield
Peter Vogliotti and Angela McHugh
Chris London
Giovas Family
V John Plummer
Peter and Rose McNeill
Dr Michael Armstrong OAM
and Mary-Anne Armstrong
The Milne Family
Mark Howard
Debra and Peter Lindwall

CUSTODIANS FOR A CURE (ESTATES)

The Estate of the Late Zara Splayford
The Estate of the Late Ann Margaret Campbell
The Estate of the Late Sydney Donald Smith
The Estate of the Late Brett Arthur Gardiner
The Estate of the Late Sandra Margaret Taylor
The Estate of the Late John Lethe
The Estate of the Late Mary Elizabeth Brodie
The Estate of the Late Peter Hammond
The Estate of the Late Helen McKinnon
The Estate of the Late Peter Freilich
The Estate of the Late Alan Johnson
The Estate of the Late Catherine Dwan
The Estate of the Late Arthur Bryce
The Estate of the Late June Taylor
The Estate of the Late Betty Lorraine Brabazon
The Estate of the Late John Brian Whittle
The Estate of the Late Beverley Lyla Hodges
The Estate of the Late Craig Michael Standing
The Estate of the Late Nigel John Parkin
The Estate of the Late Mena Valerie Good
The Estate of the Late Valerie Gloria Grummet

Partners

What an amazing and supportive community we have!

“We are indebted to our partners from all walks of life and all corners of Australia for your ongoing commitment and support as we strive towards zero deaths from melanoma. Whether you are a community fundraiser, an event participant, a one-off or regular donor large or small, a volunteer speaker, a corporate sponsor or part of a passionate community group, your contribution is helping save lives. Thank you.” – THE MIA TEAM



CLAYTON UTZ



ANNETTE GIBBARD – APPEAL DONOR

'I started donating to MIA after my daughter Melissa was diagnosed with Stage III melanoma in early 2018. The treatment and advice she received from Prof Georgina Long and her wonderful team was world class. I vowed that whenever I had the means I would donate to this wonderful institution. I can't thank them enough for saving my daughter's life.

I feel that whatever small part I can play through my donations in helping MIA reach its goal of zero deaths from melanoma is

immensely worth it. I feel grateful that I can contribute to much needed research.

Australia has one of the highest rates of melanoma in the world, so it is only natural that we should be at the forefront of trying to cure melanoma. If all Australians made it a priority to donate to MIA, they would be playing a very important role in helping find a cure for this insidious disease.

Researchers need us to donate, and we need them to find a cure. It's a team effort.'



Concise Financials

MELANOMA INSTITUTE AUSTRALIA
Statement of Comprehensive Income
For the Year Ended 30 June 2020

	2020 \$	2019 \$
REVENUE		
Donations	5,444,107	7,641,156
Education & Patient Advocacy	524,864	0
Government Support - COVID-19	487,500	0
Investment Income	616,505	775,152
Poche Centre Income	885,509	933,568
Research Income	6,586,286	7,262,035
Other Income	125,108	93,281
Change in Fair Value Through Profit & Loss (FVTPL) on financial assets	(688,655)	390,505
Total revenue from ordinary activities	13,981,224	17,095,697
EXPENSES		
Audit	(30,000)	(30,000)
In Kind Rental of Poche Centre	0	(750,820)
Personnel Costs	(10,410,376)	(9,497,828)
Conference/Functions	(17,981)	(17,683)
Administration Costs	(800,430)	(685,409)
IT Support	(322,308)	(262,820)
Utilities	(197,850)	(186,300)
Fundraising	(518,158)	(725,993)
Cleaning	(101,366)	(94,980)
Building Operations	(290,337)	(371,967)
Education & Patient Advocacy	(520,807)	(201,965)
Depreciation Expense	(760,523)	(650,316)
Bank & Investment Fees	(75,732)	(108,754)
Research Expense	(2,780,359)	(3,028,499)
Total expenses	(16,826,227)	(16,613,334)
Profit/(Loss) for the year	(2,845,003)	482,363
Total comprehensive (loss)/income for the year	(2,845,003)	482,363

During the financial year, commencing in late March 2020, like most Australian businesses, MIA was impacted significantly by COVID-19. MIA's financial impacts were immediate, with the cancellation of Melanoma March fundraising events and all remaining community fundraising for the balance of the financial year. This loss of revenue was partially offset by the gains achieved in Education & Patient Advocacy.

MIA also benefitted from the financial support through the Federal Government's JobKeeper and Cash Flow Boost Programs.

In response to the financial impacts of COVID-19, MIA undertook a two phased restructure which was completed on 30 June 2020. This restructure included some redundancies, reduced work hours and reduced salaries for non-clinical staff.

The financial impacts of COVID-19 on MIA will continue throughout 2021, but, with MIA's strong expense management and the continuation of the wonderful philanthropic support from the MIA community, MIA considers it is soundly placed financially to weather the ongoing impacts of COVID-19.

MELANOMA INSTITUTE AUSTRALIA
Statement of Financial Position
As at 30 June 2020

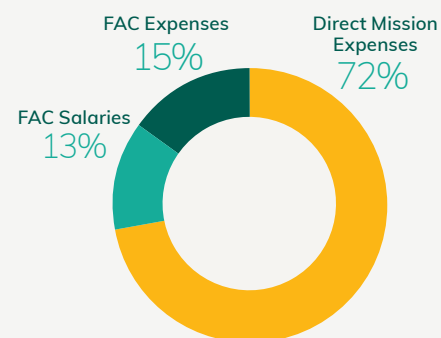
	2020 \$	2019 \$
Total Current Assets	18,651,854	20,739,226
Total Non Current Assets	2,393,027	1,478,044
TOTAL ASSETS	21,044,881	22,217,270
Total Current Liabilities	7,135,796	6,228,126
Total Non Current Liabilities	764,944	0
TOTAL LIABILITIES	7,900,740	6,228,126
NET ASSETS	13,144,141	15,989,144

MIA's net assets total \$13.1 million, and, while this has reduced considerably as a result of COVID-19, this level still enables the financial capability and capacity to drive its research projects, education and clinical care towards achieving its mission.

RODNEY THORNBERRY – BEQUESTOR

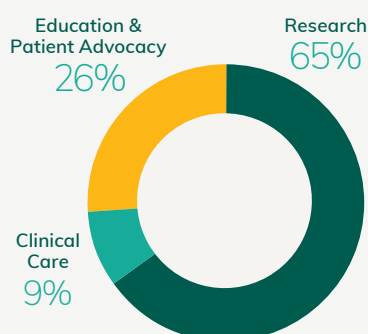
'My brother passed away from melanoma in 1993 when he was just 30 years old, and then in February 2017 I was diagnosed with melanoma which had spread to my lymph nodes. I underwent surgery with Professor Spillane and I now attend MIA for regular body mapping and check-ups. Professor Spillane assured me that there have been significant advances in treatment since my brother's passing, which gave me a great sense of relief and made me feel much more at ease.

It is fantastic to think that MIA is working towards zero deaths from melanoma and being able to contribute to that in even a small way is an amazing feeling. There are so many organisations looking for help, but with melanoma being so high in Australia and knowing we are making inroads into saving lives, makes supporting MIA so impactful. Leaving a bequest to MIA is my contribution to helping future generations survive.'



In addition to the liabilities shown, MIA has quarantined a further \$3.1 million for research projects the subject of specific donors' wishes.

FAC: Fundraising, administration and communications



MIA has increased its percentage expenditure against mission to 72% and a record expenditure on its mission pillars of \$12.1 million.



Governance

MIA is a company limited by guarantee with deductible gift recipient status. MIA is governed by a Board of Directors and advised by Faculty, led by the Co-Medical Directors. Faculty is advised on clinical, research and education matters by Committees.

BOARD OF DIRECTORS

Grant King, MA, FAICD
Chairman

Professor Georgina Long AO
BSc, PhD, MBBS, FRACP

Professor Richard Scolyer
BMedSci, MBBS, MD, FRCPA,
FRCPath, FAHMS

**Associate Professor
Jonathan Stretch AM**
D.Phil (Oxon) FRACS

Jennifer Elliott
BA (Hons) LLB (Hons) MA (Hons)

Sally Doherty
BA, GAICD

FACULTY

Professor Georgina Long AO
Co-Medical Director

Professor Richard Scolyer
Co-Medical Director

A/Prof Jonathan Stretch AM
Deputy Medical Director

A/Prof Matteo Carlino

Professor Anne Cust

A/Prof Pascale Guitera

Professor Peter Hersey

Professor Angela Hong

Professor Richard Kefford AM

A/Prof Serigne Lo

Professor Graham Mann

A/Prof Alexander Menzies

Professor Rachael Morton

Professor Omgo Nieweg

Professor Helen Rizos

A/Prof Robyn Saw

Dr Kerwin Shannon

Professor Andrew Spillane

Professor John Thompson AO

Dr James Wilmott

COMMITTEES

Clinical Committee

Professor Angela Hong (Chair)

Maria Gonzalez

Dr Linda Martin

A/Prof Alexander Menzies

Dr Tom Pennington

Dr Kerwin Shannon

Professor Andrew Spillane

A/Prof Jonathan Stretch AM

Sarah Lane

Ex-officio

Professor Georgina Long AO

Professor Richard Scolyer

Matthew Browne

Rebecca Velickovic

Research Committee

Professor Anne Cust (Chair)

Dr Iris Bartula

A/Prof Pascale Guitera

Professor Nick Hayward

Professor Richard Kefford AM
(Honouree Member)

Craig Lawn (consumer rep)

A/Prof Serigne Lo

Professor Graham Mann

A/Prof Alexander Menzies

Professor Omgo Nieweg

Professor Helen Rizos

Professor John Thompson AO

Dr James Wilmott

Ex-officio

Professor Georgina Long AO

Professor Richard Scolyer

Matthew Browne

Maria Gonzalez

Valerie Jakrot

Rebecca Velickovic

Education Committee

A/Prof Matteo Carlino (Chair)

Dr Michael Armstrong (consumer rep)

A/Prof Sydney Ch'ng

Shahn Coburn

Professor Rachael Morton

A/Prof Robyn Saw

Dr Annika Smith

Ex-officio

Professor Georgina Long AO

Professor Richard Scolyer

Matthew Browne

Danielle Fischer

Other Poche Centre Clinicians

Dr Peter Ferguson

Professor Gerald Fogarty

Dr Bruna Gouveia

Dr Edward Hsiao

Dr Rony Kapoor

Dr Robert Rawson

Dr Michael Rtshiladze

Chief Executive Officer

Matthew Browne

Susan Elder was MIA's Company
Secretary during the financial year

Please see melanoma.org.au
for full bios.

Membership at time of printing



HONOURING EMERITUS PROFESSOR JOHN THOMPSON AO

In September 2019 The University of Sydney honoured Professor John Thompson AO with the title of Emeritus Professor. John led the medical direction of MIA when The Poche Centre opened in 2010 and continued in this role until our current Co-Medical Directors took over in 2017.

'John is an outstanding surgical oncologist and is recognised internationally as one of the world's foremost experts on melanoma. His academic record is virtually unparalleled in the field.'

John has provided selfless service and inspirational leadership to MIA and beyond over many decades as a clinician, educator, researcher, academic, and teacher.

His research findings have changed the clinical practice of medicine in the field of melanoma in Australia and throughout the world and have directly resulted in improving the care and outcome of thousands of patients.'

**Professor Richard Scolyer and
Professor Georgina Long AO**



An example of one of many delightful original artworks that adorn the walls inside The Poche Centre. Support for services, education, research and policy engagement to improve the health and well-being of Indigenous people is another long term philanthropic passion of Greg Poche AO, Kay Van Norton Poche AO and Reg Richardson AM.

The artwork pictured above by Eileen Napaltjarri of Papunya, Western Desert, was kindly donated by Reg Richardson AM.



Melanoma Institute Australia

The Poche Centre, 40 Rocklands Rd, Wollstonecraft NSW 2065

P: 1300 882 353 E: info@melanoma.org.au W: melanoma.org.au

ABN: 35 123 321 148 CFN: 20341